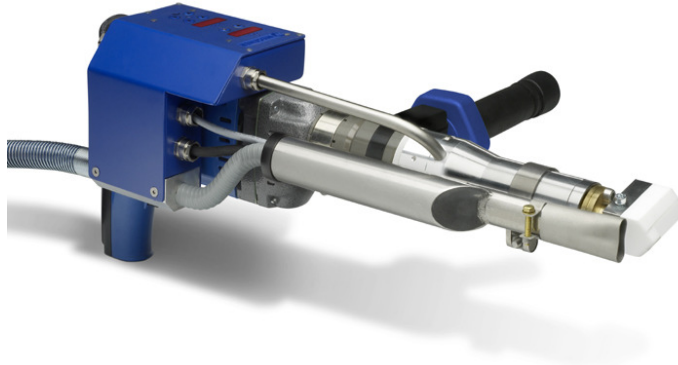


2009 Quotation for Extrusion Welder EXWELD ALPHA2-P

Versatility without comparison



- Suitable for welding **PVC, CPVC, PE, PP, PVDF**, and other thermoplastics
- Specially designed corrosion resistant screw for vinyl material
- Dual channel temperature controller for extrudate and preheat, cold start protection
- Electronically controlled drive motor with variable welding speed
- Patented, trouble-free rod intake system
- Adjustable preheat extension
- Solid, durable construction, easy operation
- Exchangeable PTFE welding shoes can be easily machined to determine weld size and configuration
- Optional heavy-duty shipping/transport case with rollers
- Multi position handle
- Requires external air – see DT 5

TECHNICAL DATA:

Power Supply:	230V Single-Phase
Power Consumption:	3960W max.
Weight:	6 Kg (approx 13 lbs)
Maximum Output:	PE -2.8 Kg/hr (6.2 lbs/hr) PP -2.4 Kg/hr (5.5 lbs/hr)
Length:	21"
Rod Size:	PP, PVC, CPVC 3 or 4mm (1/8" or 5/32") PE 3, 4 or 5mm (1/8", 5/32" or 3/16")

TWISTY rotating welding head assembly



Warranty:	12 months
Delivery Time:	Ex stock
Payment Terms:	Net 30 days (with credit approval)