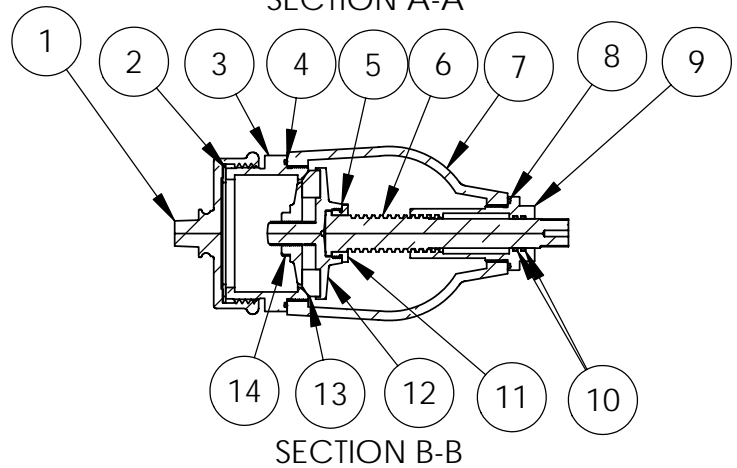
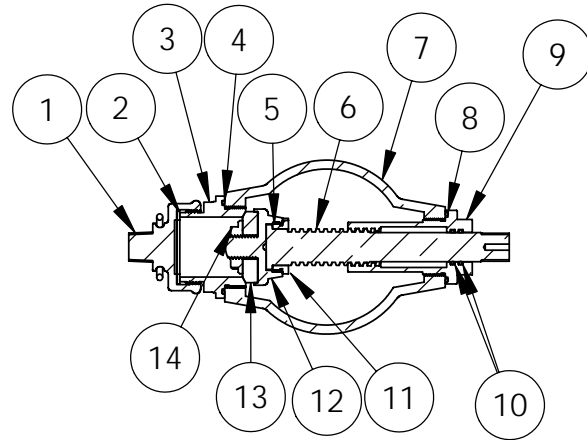
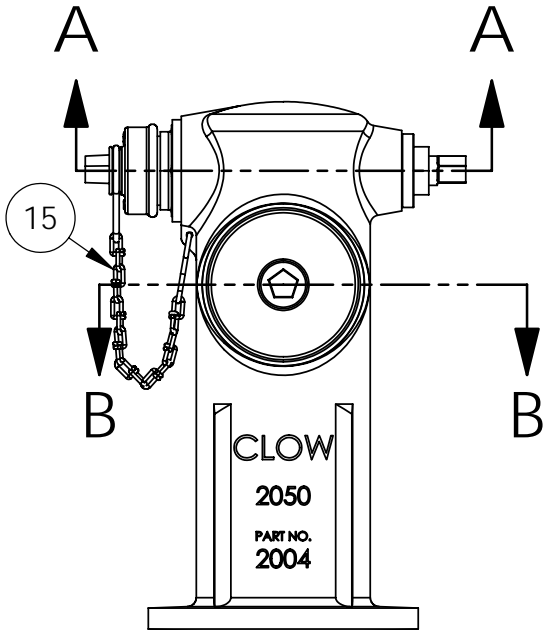


2000 SERIES WET BARREL HYDRANT  
MATERIAL LIST

**CLOW VALVE COMPANY**

MODELS 2010, 2050, 2060, & 2065

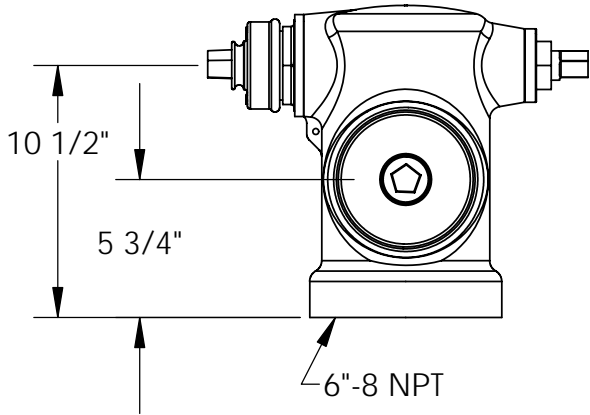


ITEM	DESCRIPTION	MATERIAL	ASTM SPEC.
1	Outlet Nozzle Cap	Gray Iron or Plastic	ASTM A126 CI B / N/A
2	Outlet Nozzle Gasket(Gray Iron Only)	Rubber	Buna N
3	Hose Outlet Nozzle or Pumper Outlet Nozzle	Brass	ASTM B584 C83600
4	Nozzle O-Ring	Rubber	Buna N
5	Set Screw	Steel	N/A
6	Stem	Brass	ASTM B763 C99500
7	Body	Brass	ASTM B584 C83600
8	Stuffing Box O-Ring	Rubber	Buna N
9	Stuffing Box	Brass	ASTM B584 C83600
10	Stuffing Box O-Ring	Rubber	Buna N
11	Stem Nut	Brass	ASTM B584 C83600
12	Valve Carrier	Brass	ASTM B763 C99500
13	Valve Washer	Rubber	Urethane
14	Retaining Nut	Brass	ASTM B763 C99500
15	Chain Assembly	Steel	Zinc Plated

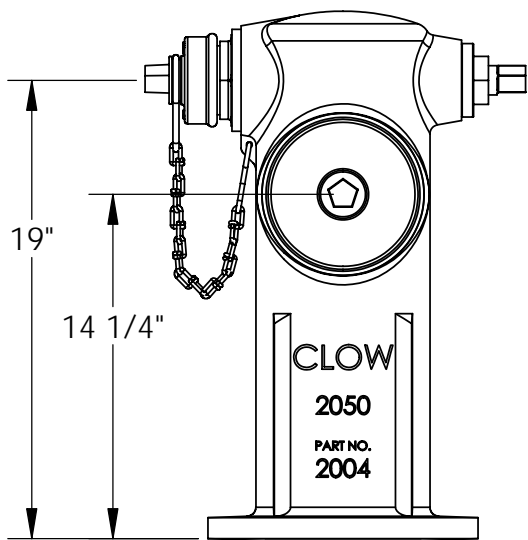
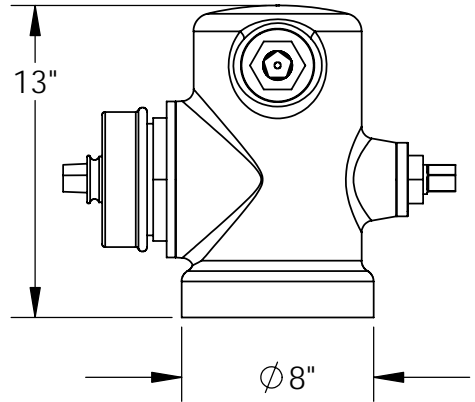
2000 SERIES WET BARREL HYDRANT  
GENERAL DIMENSIONS

**CLOW VALVE COMPANY**

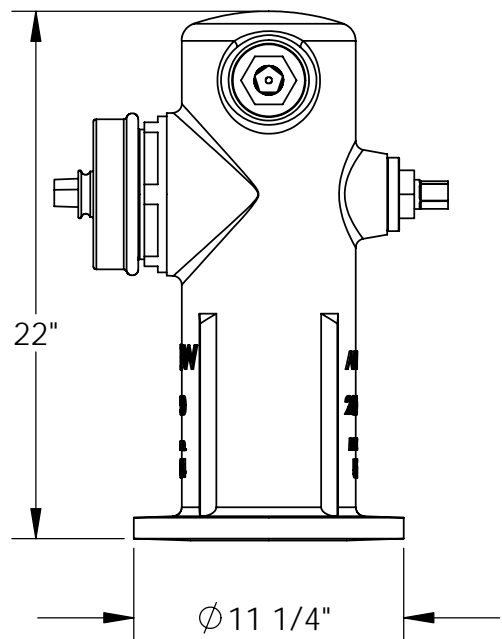
MODELS 2010 & 2050



MODEL  
2010



MODEL  
2050

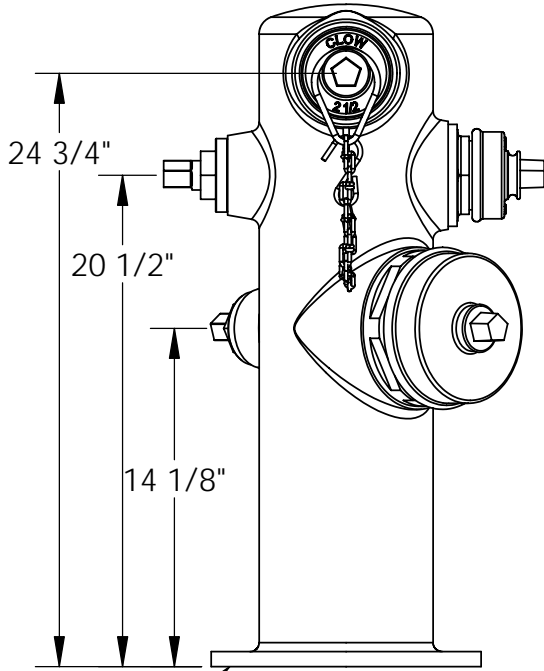


← Drilled per customer specifications

2000 SERIES WET BARREL HYDRANT  
GENERAL DIMENSIONS

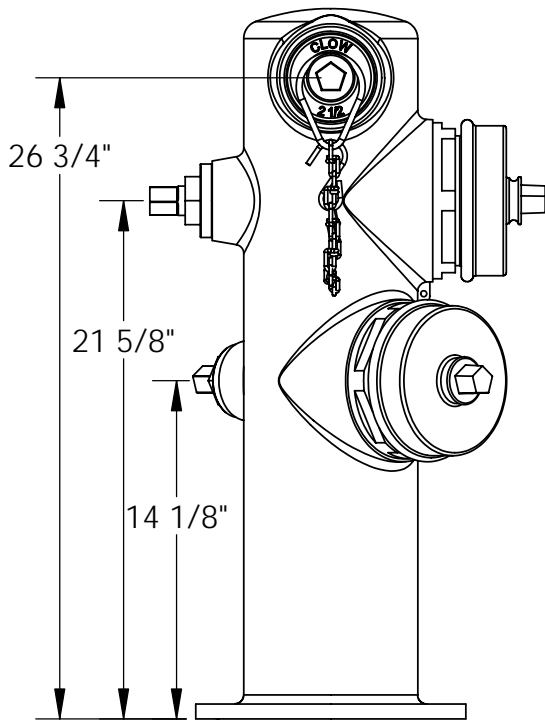
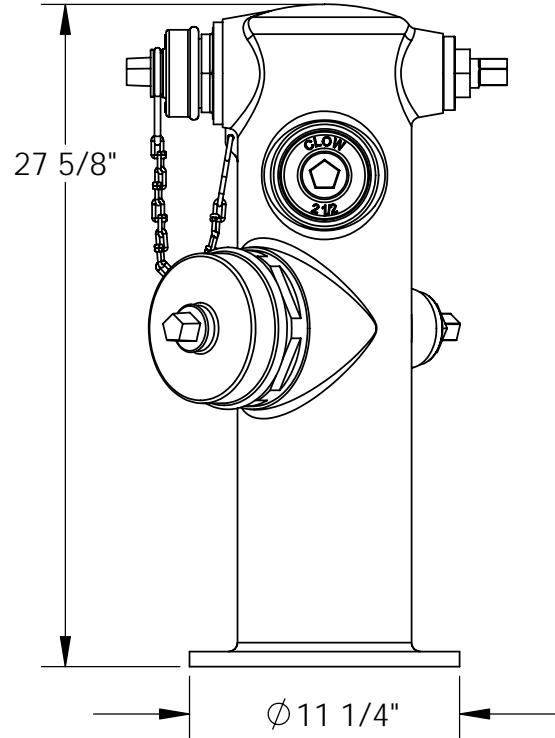
**CLOW VALVE COMPANY**

MODELS 2060 & 2065



Drilled per customer specifications

MODEL  
2060



Drilled per customer specifications

MODEL  
2065

